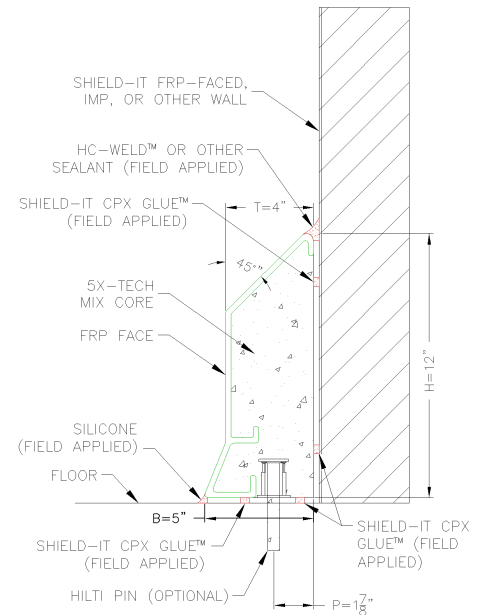


Curb-It 4P12C

Hygienic Waterproof Wall Protection

Concrete Stem Wall Alternative 4" x 12"



- Protects walls against impact from fork lifts, pallet jacks, hand carts, and foot traffic
- Hygienic protection against water and bacteria infiltration
- Double-sealed installation eliminates any bacteria harboring voids
- No paints, low to no-maintenance
- Coved foot provides smooth transition to floor
- Optional 1/2" Hilti anchors for maximum impact resistance

Curb-It 4P12C is a modular curbing with a sloping top and coved foot that can sit on a finished floor. Curb-It's composite materials are water-resistant 5X-Tech concrete mix with a FRP (Fiberglass Reinforced Polymer) face. FRP is strong, durable, cleanable, and scratch-resistant. 48" long linear Curb-It sections are installed along walls and 24" long end pieces are located at door openings or other terminations. 12" long coped inside corner pieces meet linear curbing pieces at room interior corners and outside corner pieces wrap exterior corners. One modular piece along each wall can be field cut so the joined pieces can span any length wall. Bonds to floor and wall with CPX Glue, a hybrid polymer. The top seam where Curb-It meets the wall and joints can be finished with a highly durable food-grade sealant: HC-Weld, or an alternative sealant choice. The base of Cove-style curbs can be finished with food-grade silicone or an alternate sealant.

Curb-It is a desirable alternative to poured-in-place interior concrete curbing in speed and ease of installation, and outperforms modular curbing competitors in strength and durability.

Technical Information	Curb Section	Inside Corner	Outside Corner	End Piece
L= Length	48"	12"	4.875"	24"
H= Height	12"	12"	12"	12"
T= Thickness	4.0"	4.0"	4.0"	4.0"
B= Base Thickness	4.875"	4.875"	4.875"	4.875"
W= Weight	148lbs.			74lbs.
Optional Anchorage	4 pins	N/A	N/A	2 pins
Packaging		Adhesive Requirements		
18 Curb Sections @ 48"		CPX Glue	0.3049	tubes/LF
Per Pallet		HC-Weld	0.1078	tubes/LF
		Silicone	0.0647	tubes/LF